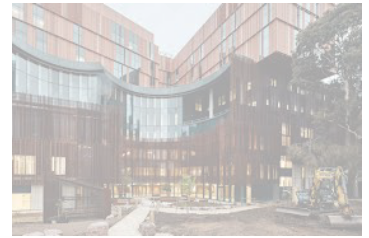


# **T**Ropical trans**O**esophageal **P**eriodoperative and **I**ntensive care **e**Xamination

**27/2 to 1/3/2026 | Victorian Heart Hospital, Melbourne**

Join us for an immersive, hands-on echocardiography course at Australia's first dedicated heart hospital. You'll gain practical skills in transoesophageal echocardiography (TOE) guided by a multidisciplinary team of expert cardiologists, intensivists, and cardiac anaesthetists.



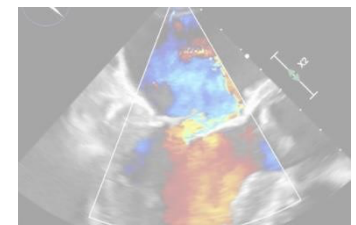
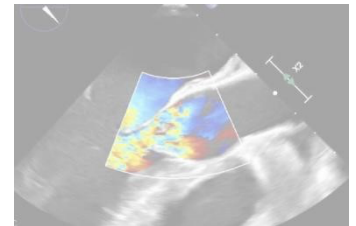
## **Who Should Attend?**

This course is ideal for clinicians experienced in transthoracic echocardiography (> 50 studies performed and reported) who are looking to expand into TOE. Perfect for:

- Intensivists
- Anaesthetists (including cardiac anaesthetic fellows)
- Emergency Physicians

## **What You'll Learn:**

- Cardiac function assessment
- Haemodynamic evaluation in shock and post-cardiac surgery
- Common valvular pathologies
- Use of TOE in support of mechanical circulatory support



## **What to Expect:**

- Small-group, hands-on sessions using state-of-the-art simulators and EchoPAC workstations
- Optional advanced day (Day 3) covering 3D imaging, strain, rheumatic heart disease and adult congenital heart disease

## **Venue:**

Victorian Heart Hospital, level 2, room 2.12  
631 Blackburn Road, Clayton

## **Registration:**

- 2-Day Course (27/2 to 28/2/26): \$1000
- 3-Day Course (27/2 to 1/3/26): \$1500
- Advanced day only (1/3/2026): \$500
- To book and for questions please contact: [florian.pracher@health.qld.gov.au](mailto:florian.pracher@health.qld.gov.au)

TROPIX meets the requirements for a new CCPU unit in focused TOE (ASUM) and is recognized for CPD by ANCZA, CICM and ACEM.

